



# Installation Guide



## 2.0 Description

The LED Dimmer is a rotary controlled, modular dimmer mechanism rated at 350 VA. Up to six dimmer mechanisms can be installed in a plate!

Designed for LED lamps, the unit utilises powerful and sophisticated dimming technology to provide control.

The LED Dimmer also incorporates over-current and thermal fuse cutoff (non-recoverable) protection devices and is capable of withstanding persistent short circuit conditions.

## 3.0 Features

- Modular dimming mechanism.
- Two-wire phase control wall plate dimmer.
- Soft-start for lamp and driver life.
- Provide optimised dimming of LED based lamps and drivers.
- Compatibility with incandescent lamps, 240V halogen lamps, Low voltage halogen lamp with dimmable electronic transformer, etc
- Wall or architrave mounting options.
- Wide range of plate styles and colour variants available.
- Suitable for new installations or retro-fit applications.
- Inbuilt Over-Current and Over-Temperature protection.
- Full short circuit protection.
- Immune to high frequency (ripple) signal injection on mains supply.
- Complies with Australian and International EMC Standards.

## Table of Contents

**Section** .....

1.0 Product Range .....

2.0 Description .....

3.0 Features .....

4.0 Electrical Specification.....

5.0 Load Compatibility .....

6.0 Wiring Diagram .....

7.0 Installation .....

8.0 Warranty Statement.....




## 1.0 Product Range

Product No.	Description
AU-RD350VA	Rotary Controlled LED Dimmer, 350 VA

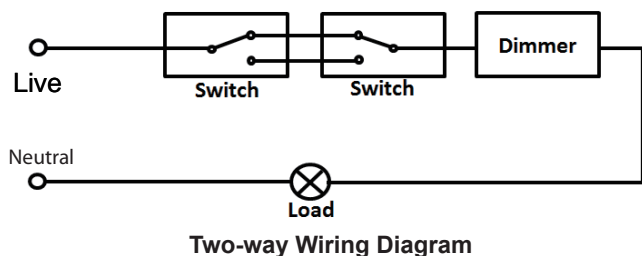
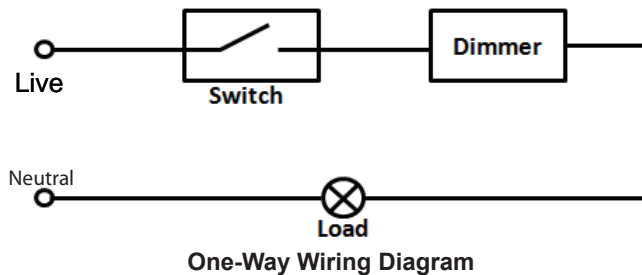
## 4.0 Electrical Specification

Parameter	Value
Nominal Operating Voltage	220-240 V ac
Nominal Operating Frequency	50 Hz
Maximum Load	350 VA @1 Gang Derate for multi-gang applications
Minimum Load	10 VA
Dimming Technique	Trailing Edge Phase Control
Mounting Centres	84mm Australian Pattern Plate
Safety Compliance	AS/NZS 3100, AS/NZS 3133, IEC 60669-2-1
EMC Compliance	AS/NZS CISPR15, IEC 60669-2-1 (26.1, 26.2), IEC 61000-3-2 (Excepting when used in conjunction with Electronic loads)
Specifications Typical @ 240 V ac 25 °C	
Suitable for Indoor Use Only	
No User Serviceable Parts Inside	

## 5.0 Load Compatibility

Load Symbol	Compatible Loads	AU-RD350VA	
		Maximum Load	Minimum Load
	Dimmable LED Lighting	150 W	10 W
	Incandescent Lighting 240 V Halogen Lamps	350 W	10 W
	Low Voltage Halogen Lighting with Electronic Transformers	350 VA	10 VA

## 6.0 Wiring Diagram



### NOTE:

- The LED dimmer series are designed for One-Way or Two-Way operation as above diagrams.
- Two or more dimmers cannot be connected in parallel or series to control the same load from two different locations.
- Dimmer Mechanism wiring is NOT polarity sensitive

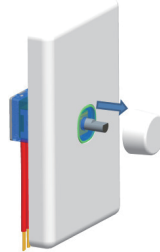
**It is illegal for persons other than an appropriately licensed electrical contractor or other persons authorised by legislation to work on the fixed wiring of any electrical installation. Penalties for conviction are severe!**

## 7.0 Installation

To connect the required lighting loads, then follow the following steps:

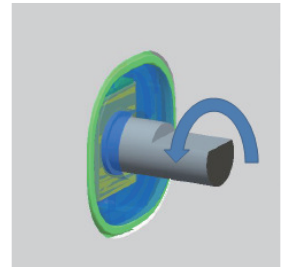
### Step 1

Leave the dimmer connected, but remove the dimming knob from the dimming shaft



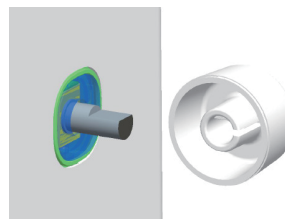
### Step 2

Turn the dimmer shaft anti-clockwise until the available installation level is reached.



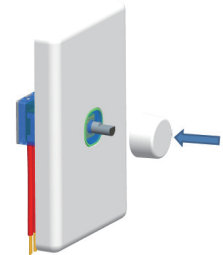
### Step 3

Align the plane on the front face of the dimmer with the plane on the inside of the dimmer knob



### Step 4

Push the dimmer knob back onto the shaft such that the plane remain aligned



## 8.0 Warranty Statement

1. This product is guaranteed against faulty workmanship and materials for a period of two years from the date of installation.
2. This warranty is expressly subject to the product being installed, wired, tested, operated and used in accordance with the manufacturer's instructions.