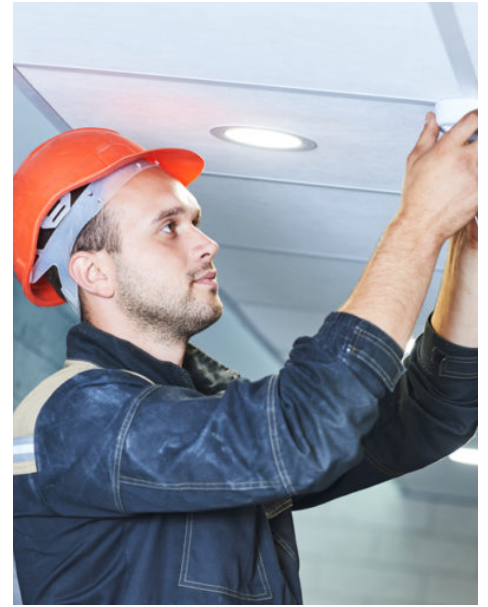


SMOKE ALARMS BATTERY POWERED



RANGER SERIES BATTERY POWERED 1YR & 10YR MODELS

Ranger Battery Powered Smoke Alarms are powered by either a 1-year 9V replaceable battery or 10-year non-replaceable lithium battery.

This is a stand-alone alarm, fitted with a test/hush/silence button to facilitate testing of the alarm. The silence function also allows the alarm to be silenced in the case of false alarm.

FEATURES

- 1-year replaceable 9V battery or 10-year non-replaceable lithium battery
- Indicator lights for test and fault warnings
- Loud alarm - 85dB(A) @ 3m
- CSIRO ActivFire listed
- Meetings Australian Smoke Alarm standards (AS3786:2014)
- 7 year warranty



SPECIFICATIONS

MODEL NUMBERS	1yr: EP-RANG-1 10yr: EP-RANG-10	POWER	1yr: 9V replaceable battery 10yr: 3V non replaceable lithium battery
NORMAL OPERATING & STORAGE TEMPERATURE	0° to 40°	SENSOR	Photoelectric optical chamber
DIMENSIONS	1yr: 108mm x 36.7mm 10yr: 120mm x 36.6mm	ALARM VOLUME	>85dB(A) @ 3m
WEIGHT	1yr: 132g 10yr: 125g	INTERCONNECT	None, stand-alone unit
WARRANTY	7 Years	NORMAL OPERATING & STORAGE HUMIDITY	15% to 95% relative humidity (non-condensing)
		INCLUDES	Screws and mounting plate

