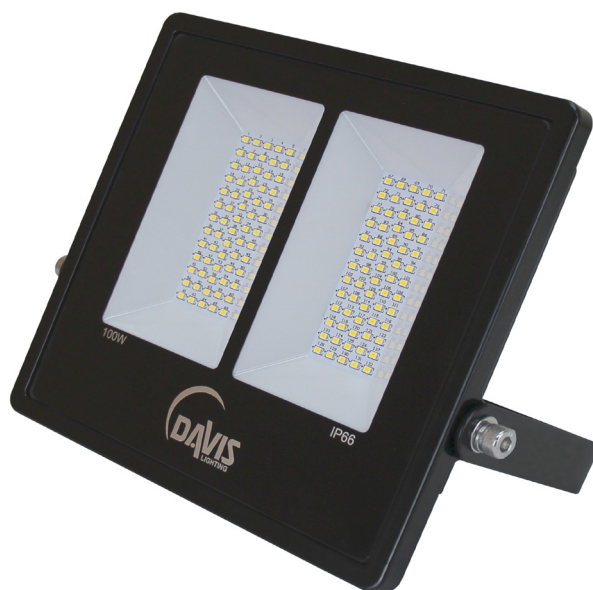


FLA SERIES

FLOODLIGHT

10-200W



LED FLOOD LIGHT

The FLA Series of flood lights exploits the advantages of LED technology across a generous range of low power luminaires, from the compact 10 W model through to the meatier 200 W for more serious applications. All luminaires in the range feature a die-cast aluminium body and a rubberised supply cable, and an adjustable trunnion bracket for 180° aiming. Eco-friendly and with surprisingly low energy consumption (down to 50% of traditional light sources), these fittings require near-zero maintenance and feature fast turn-on for instant enlightenment. And the IP66 rating ensures continued protection and long life amidst the dustiest and wettest of conditions.

FEATURES

- » Die-cast aluminium body
- » Low energy consumption
- » Rubber supply cable
- » Fast turn-on, near zero maintenance
- » Adjustable mounting bracket
- » IP66 rating

APPLICATIONS

- » Plazas
- » Courtyards
- » Factories, warehouses
- » Gardens, parks
- » Sporting venues

SPECIFICATIONS

Model	FLA10G14K	FLA30G14K	FLA50G14K	FLA100G14K	FLA150G14K	FLA200G14K
Nominal Power	10 W	30 W	50 W	100 W	150 W	200 W
Input Voltage	220 - 240 VAC 50 Hz					
Luminous Flux (lm)	850	3000	4700	9180	14400	18300
Efficacy (lm/W)	85	95	95	95	95	95
CRI	≥70					
Power Factor	0.95					
Colour Temp. (K)	3000, 4000, 5000, 6000					
LED Life (L70B50)	50,000 hr					
Weight (kg)	0.40	0.75	0.95	1.75	3.75	3.75

Manufactured under ISO 9001:2015 to standards

IEC/AS/NZS60598.1
IEC/AS/NZS60598.2.5
IEC/AS/NZS CISPR 15

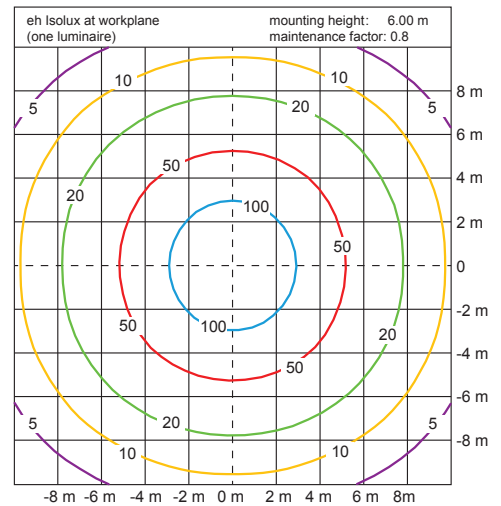
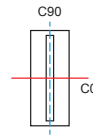
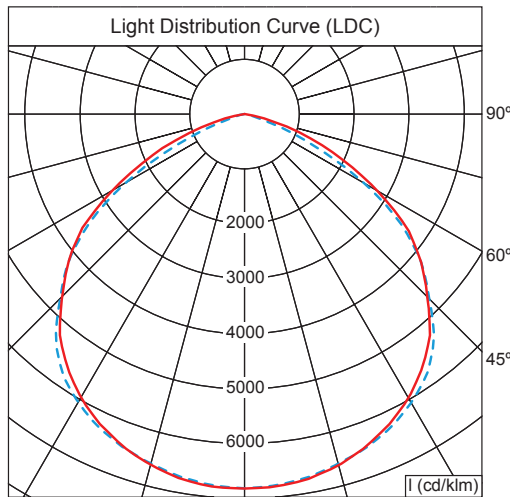


FLA 180510

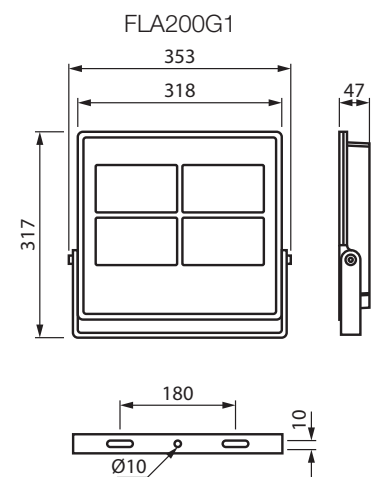
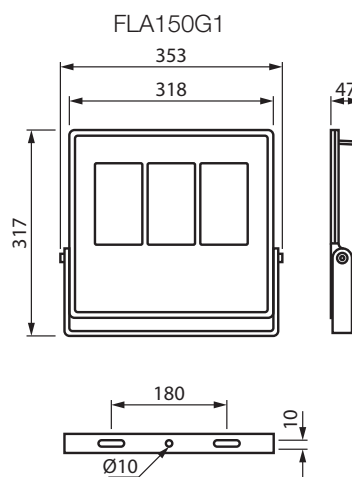
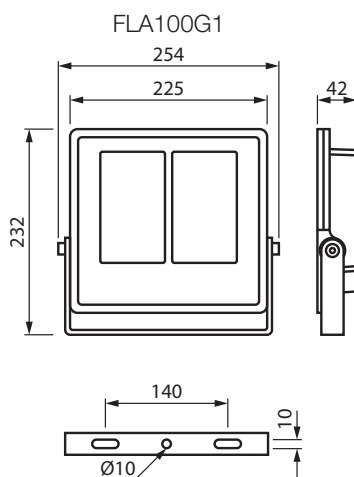
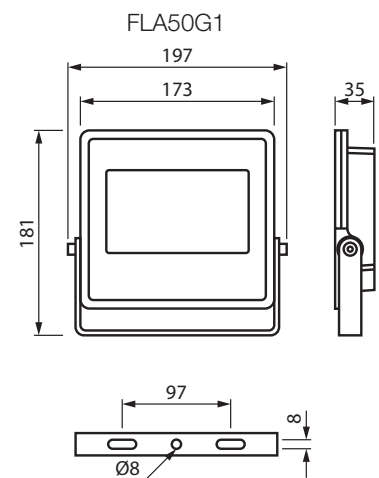
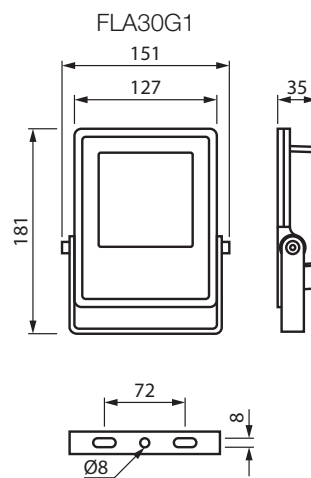
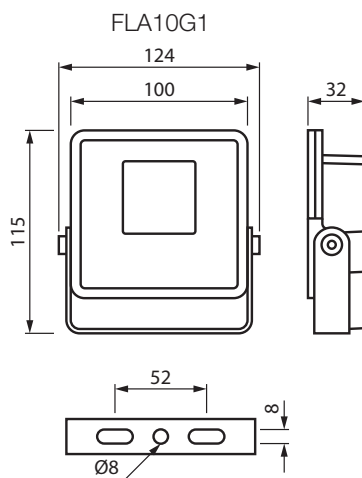


LIGHTING DATA

FLA200G14K



DIMENSIONS



Characteristics and specifications may change without notice. All electrical installations / connections should be carried out by a competent person at all times. Application images are indicative only and may not contain actual Davis product. The information contained in this publication is typical and must not be interpreted as a guarantee of individual product performance.

